



**Australian Government**

**Department of Infrastructure, Transport,  
Regional Development, Communications and the Arts**

# **Forum on Western Sydney Airport (FoWSA)**

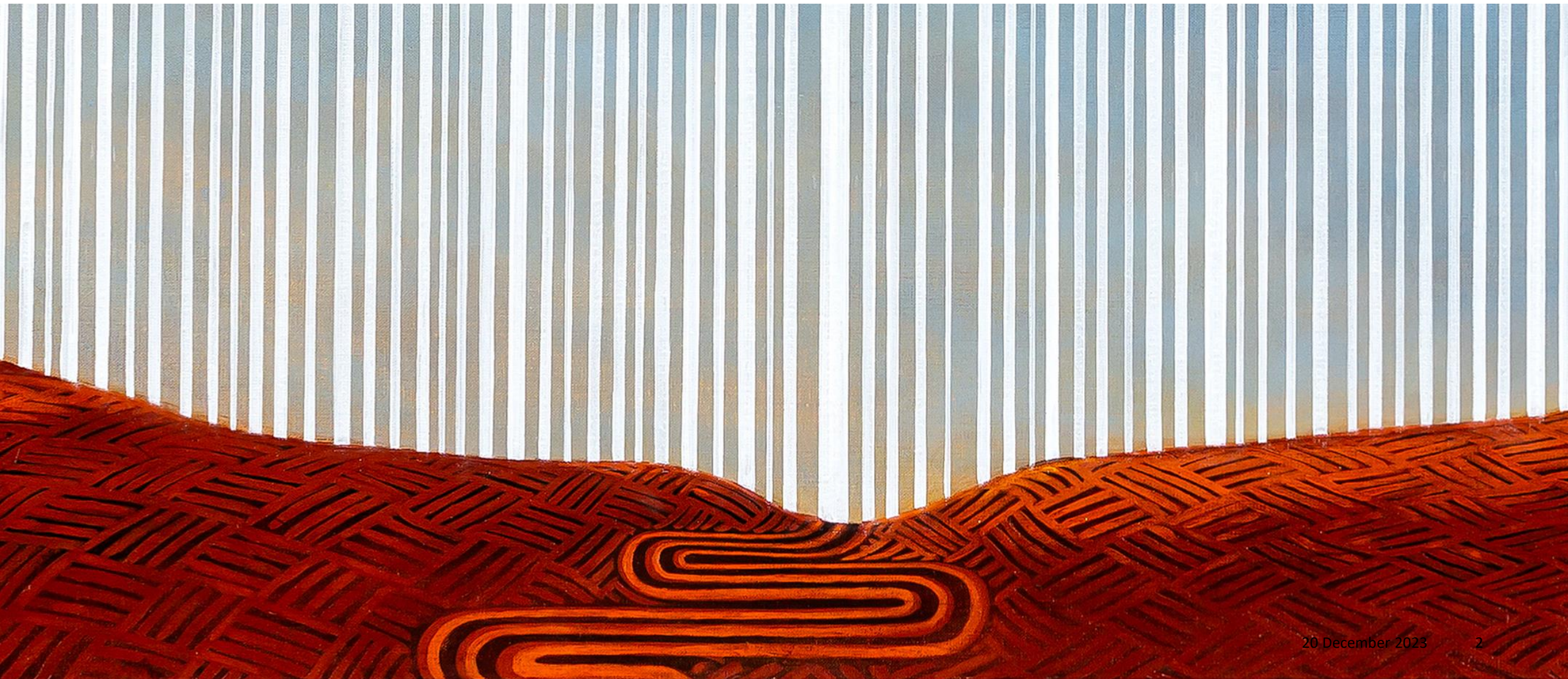
23 November 2023





# Acknowledgement of Country

I would like to begin by acknowledging the Traditional Owners and Custodians of the land on which we meet today, and pay my respects to their Elders past, present and emerging. I extend my respect to Aboriginal and Torres Strait Islander people joining us today.



20 December 2023

2



# Welcome from the Chair

No.	Item	Presenter	Time
1.	Welcome from the Chair	Lee de Winton, Chair	10:00am
2.	Action items	Lee de Winton, Chair	10:05am
3.	Engagement update – Release of the draft EIS	WSP	10:15am
4.	Draft EIS submissions and learnings	DITRDCA	10:45am
	Morning Tea		11:30am
5.	Update from the Air Navigation Service Provider	Airservices Australia	11:45am
6.	Update from the airport operator	WSA Co	12:00pm
7.	Other business <ul style="list-style-type: none"><li>• next meeting</li><li>• future discussion items</li></ul>	All	12:15pm
	Meeting close		12:30pm

## Actions from Previous Meetings

Mtg	Item No.	Action Item	Response
21 28 Sep 2023	1	WSP Australia to provide details to FoWSA on the reason for selecting the day and evening time periods for ambient noise monitoring	FoWSA Secretariat provided WSP Australia's response to FoWSA on 21 November 2023.
	2	Send FoWSA Members a newsletter with summarised information from meeting #21	FoWSA Secretariat sent newsletter to members and published online on 31 October 2023.

# Action items from previous meetings

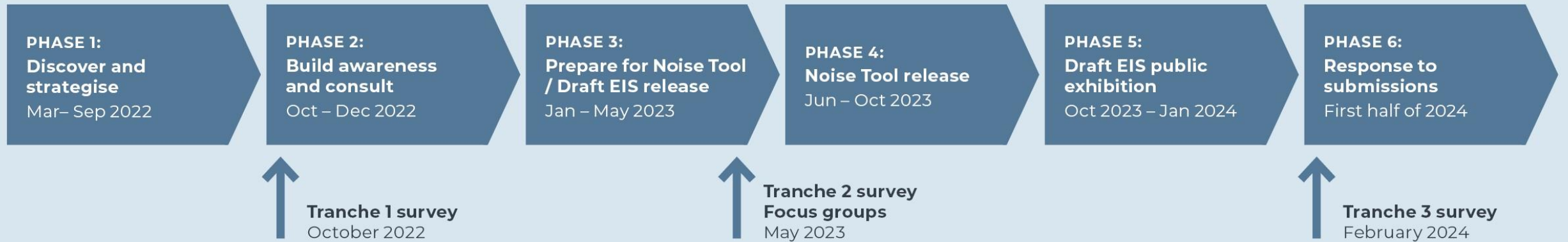
Mtg No.	Item No.	Action Item	Response
27 June 2023	3	FoWSA to receive an update from Transport for NSW next year on the transport projects to support the opening of WSI.	Open. Briefing to be provided at meeting in 2024.
	4	FoWSA to receive briefing from WPCA on infrastructure activity in Western Sydney at future meeting.	Open. Briefing to be provided at meeting in 2024.

# Engagement update – release of the draft EIS

Deborah Palmer, WSP Australia



# Engagement phases



# Public exhibition and next steps

## Public exhibition:

The draft EIS is on public exhibition from **24 October 2023** until **31 January 2024** (67 business days).

Submission can be made:

- **Online** via [wsiflightpaths.gov.au](https://wsiflightpaths.gov.au)
- **By email** to [eis.submissions@infrastructure.gov.au](mailto:eis.submissions@infrastructure.gov.au)
- **By mail** to Att: WSI Flight Paths Team, GPO Box 594, CANBERRA ACT 2601.

## Final EIS:

The final EIS must consider all submissions received during the exhibition period.

It will contain a Submissions Report that will summarise submission comments and how they have been addressed.

**Final EIS publication**

**2<sup>nd</sup> half of 2024**



# Information available for the community




## Digital Draft Environmental Impact Statement

 Project overview

 Strategic context and need

 Airspace constraints

 Planning and assessment process

 Project development

 Aircraft noise

 Air quality and greenhouse gas

 Aircraft hazard and risk

 Land use

### Project overview



Overview	+
Key features of the project	+

# Community engagement during public exhibition

- Community information and feedback sessions
- Information stalls
- Online webinar
- Offer of meetings with landowners close to WSI
- Draft EIS and supporting material accessible at council libraries across Sydney and online
- Dedicated 1800 number and email address
- Awareness raising activities:
  - Community posters
  - Digital stakeholder information kits
  - Social media
  - Information flyer handout at train stations
  - Public notices in newspapers



# Engagement summary



**18** information stalls  
**1,957** community members engaged so far



**28** community information and feedback sessions  
**1,201** community members attended so far



**44** stakeholder briefings



**124** properties doorknocked and individual meetings offered for draft NIPA



**2,235** registered for email updates



**21** train stations  
**4,300** flyers handed out



**62** areas across Sydney  
Around **150** posters put up



**233** enquiries received via the 1800 line



**over 490** enquiries received via the project email

# Engagement summary



**421,656** website visits



**271,000** Aircraft Overflight Noise Tool visits



**280** submissions received



Approximately **9,000** video views



Advertisements ran in national, state and local newspapers in late October and in November 2023



**217,910** people reached via targeted social media



Over **2 million** residences letterbox dropped



**77** stakeholders sent project collateral  
Around **26,000** copies of brochures sent



**22** hard copies of the draft EIS available  
**1,975** copies of executive summary sent

## Community information and feedback sessions

4 Nov	<b>St Clair</b> Autumnleaf Neighbourhood Centre, 1-4pm
8 Nov	<b>Warragamba</b> Town Hall, 4-7pm
11 Nov	<b>Blaxland</b> Community Centre, 1-4pm
14 Nov	<b>Online</b> webinar, 6.30-8.30pm
15 Nov	<b>Penrith</b> Panthers Club, 4-7pm
16 Nov	<b>Bringelly</b> Community Centre, 4-7pm
22 Nov	<b>Sydenham</b> St Peters Town Hall, 4-7pm
23 Nov	<b>Granville</b> Centre, 4-7pm
30 Nov	<b>Plumpton</b> Neighbourhood Centre, 4-7pm
2 Dec	<b>Bankstown</b> Sports Club, 1-4pm
9 Dec	<b>Bella Vista</b> Village Green Community Centre, 1-4pm
Dec	<b>North Richmond</b> , TBC

## Information stalls

28 Oct	<b>St Clair</b> Shopping Centre, 9am-4pm
29 Oct	Westfield <b>Penrith</b> , 10am-5pm
2 Nov	<b>Springwood</b> Town Square, 9am-4pm
4 Nov	Westfield <b>Mt Druit</b> , 10am-5pm
5 Nov	<b>Luddenham</b> IGA, 9am-4pm
17 Nov	<b>Marrickville</b> Metro, 10am-4pm
18 Nov	<b>Oran Park</b> Podium, 10am-3pm
19 Nov	<b>Auburn</b> Central Shopping Centre, 10am-4pm
25 Nov	<b>Clemton Park</b> Shopping Village, 10am-3pm
26 Nov	<b>Bankstown</b> Central Shopping Centre, 10am-4pm
2 Dec	<b>Norwest</b> Marketown, 10am-4pm





# Key themes from engagement to date

- Feedback and sentiment varies according to location
- "What does it mean for me"
- 24 hour operations / no curfew (for those who do and don't support WSI)
- Draft NIPA and noise insulation requests (outside ANEC 20)
- Jobs and business opportunities
- Land planning controls around WSI & Aerotropolis
- Flight path location concerns and suggestions to move to other areas
- Changes to Sydney KSA Airport flight paths concerns

# Having your say



## **NOW:**

Feedback on the draft EIS can be provided at:

- Visit [wsiflightpaths.gov.au](https://wsiflightpaths.gov.au) and complete the submission form
- Email [eis.submissions@infrastructure.gov.au](mailto:eis.submissions@infrastructure.gov.au)
- Post to:

WSI Flight Paths Team

Department of Infrastructure, Transport,  
Regional Development, Communications and  
the Arts

GPO Box594

Canberra ACT 2601

**Submissions close 31 January 2024**



## **Making an effective draft EIS submission:**

- Focus on your areas of concern
- Explain what the impacts will be to you or your community
- Provide alternative suggestions and solutions, if you have any
- Keep it clear and concise
- Use drawings or diagrams if it helps

# Community Engagement Team contact details

**Dedicated phone number:**

1800 038 160

**Email:**

[wsiflightpaths@infrastructure.gov.au](mailto:wsiflightpaths@infrastructure.gov.au)

**Online Community Portal:**

[wsiflightpaths.gov.au](https://wsiflightpaths.gov.au)



# Market research – Tranche 1, Tranche 2 and Focus Group findings



# Methodology

## Market research sampling approach

Random sampling approach, with residents in:

- Zone A: Residents within a 15km radius of Western Sydney International Airport (Penrith, Liverpool, Camden)
- Zone B: Residents within a 15-30km radius of the airport (Blue Mountains, Penrith, Blacktown, Fairfield, Cumberland, Canterbury-Bankstown, Liverpool, Campbelltown and Wollondilly)
- Zone C: Residents within a 30-50km radius of the airport (Greater Sydney).

The Tranche 1 survey (n=1000) and Tranche 2 survey research (n=505) was designed to identify community perspectives across the study area and to provide results that are representative of the wider population

- 80% phone survey
- 20% online (panel)

## Survey questions

The survey questions in both Tranche 1 and 2 focused on:

- Awareness of the project by residents within each Zone
- Level of knowledge and understanding of the airspace and flight path design process
- Perceived issues and impacts
- Communications preferences
- Trusted sources of information about regional matters
- Interest in receiving further information about the project / joining the project mailing list
- Demographic characteristics of the sample.

Key additions to the Tranche 2 survey were:

- Interest in providing feedback on the draft Environmental Impact Statement (EIS)
- Capacity to provide informed feedback on the EIS.

## Focus group research

- Detailed exploration of what participants know about the project (including any misperceptions), what issues matter most to them, and what more they would like to know.
- Test project messaging and collateral.
- Explore the perspectives of people who are less well represented in the survey research.
- All focus groups were used to target people who speak a language other than English at home, with a focus on prominent community language.
- The groups were held with the assistance of interpreters to support participation by all.

Four x 90 minute focus groups were conducted:

- 1x group in Arabic (Zones A and B)
- 1x group in Hindi (Zones A and B)
- 1x group in Vietnamese (Zones A and B)
- 1x group in Mandarin (Zones A and B).

# Key findings



# Summary of key changes between tranche 1 and 2 market research and focus groups

## Awareness

- Awareness that design work on the flight paths for the new airport is underway increased
- The focus groups suggested there may be a lower level of awareness among culturally and linguistically diverse community members
- Large increase in awareness relating to the *forthcoming release of the draft EIS*.

# Summary of key changes between tranche 1 and 2 market research and focus groups

## Interest

- Levels of interest in the flight path design process similar across Tranche 1 and 2
- Overall moderate level of interest in the flight path design process
- Levels of interest higher in Zones A and B.
- Tranche 2 showed an increase in the number of people who had spoken to another member of the community about the flight paths in the last month (a proxy for 'interest')
- Focus group research - one to two community members in each group were particularly interested in the flight path design process.
- An overall low level of understanding of the flight path design process
- Focus group research - low level of understanding among most participants, with one to two people in each group having a moderate to strong understanding of the flight path design process.

# Summary of key changes between tranche 1 and 2 market research and focus groups

## Key issues of interest

- Location for the flight paths; noise impacts by location; air traffic frequency and height; planning and approvals process.
- In Tranche 2 there was also interest in how the airport will run, the development and construction program, and more information generally.
- Research results reflect the topics of interest raised in the focus groups
- Focus groups also raised how convenient and affordable to access the new airport by public transport; avoid further congestion of the road network; how WSI would operate relative to the KSA; environmental impact of flights on human health and the World Heritage Listed Blue Mountains; and how sustainable the new airport would be.

# Summary of key changes between tranche 1 and 2 market research and focus groups

## Communications

- In both tranches - letterbox drop; social media and traditional media.
- In Tranche 2, letterbox drop was a particularly strong preference for Zone A. Local Council was a strong preference for Zone B and website was a strong preference in Zone C.
- Focus group participants - social media, verbal communications, community papers, regular website updates, newsletters, councils and community organisations.
- A strong desire for graphics, visualisations and simple, non-technical language.
- One in three community members had an interest in receiving further information about the project.

# Summary of key changes between tranche 1 and 2 market research and focus groups

## Interest in providing feedback on draft EIS

- Highest levels of interest in providing feedback on the EIS in Zones A and B, compared with a lower level of interest in Zone C.
- Low to moderate level of understanding of the EIS
- Respondents in Zones A and B reported greater capacity to provide informed feedback than those in Zone C.
- The focus groups - importance of effectively communicating with people who will be most impacted by the flight paths. Ensure they have a clear understanding of opportunities to find out more about the EIS and have their say.



**Australian Government**

**Department of Infrastructure, Transport,  
Regional Development, Communications and the Arts**

# **Draft EIS, submissions and learnings**

*David Jansen, Assistant Secretary, Western Sydney Airport  
Regulatory Policy Branch*





# What is in the draft EIS?

- Part A Background
  - Project setting and existing airspace
  - EIS process and requirements
- Part B The Project
  - Development of flight paths
  - Changes to other airports' flight paths
  - Engagement
- Part C Environmental Impact Assessment
  - Individual chapters on assessment topics incl. aircraft noise, air quality, land use, biodiversity, economic, human health, biodiversity, hazards and risk
  - Draft Noise Insulation and Property Acquisition policy
- Part D EIS Synthesis
  - Mitigation and environmental management
- Technical papers



## Digital Draft Environmental Impact Statement

Project overview

- Project overview
- Strategic context and need
- Airspace constraints
- Planning and assessment process
- Project development
- Aircraft noise
- Air quality and noise

[www.wsiflightpaths.gov.au/digital-draft-eis](http://www.wsiflightpaths.gov.au/digital-draft-eis)

## Western Sydney International (Nancy-Bird Walton) Airport Aircraft Overflight Noise Tool

### Show WSI Flight Paths

Flight paths for arriving and departing aircraft will change based on the runway in use and the time of day.

Change the 'Runway mode in operation' and 'Time of Day' filters below to see flight paths for different operating scenarios.

Altitude information is shown with reference to runway level, which is approximately 260 feet or 80 metres above sea level.

See the [Preliminary Flight Paths brochure](#) for more information.

◆ Runway mode in operation ⓘ

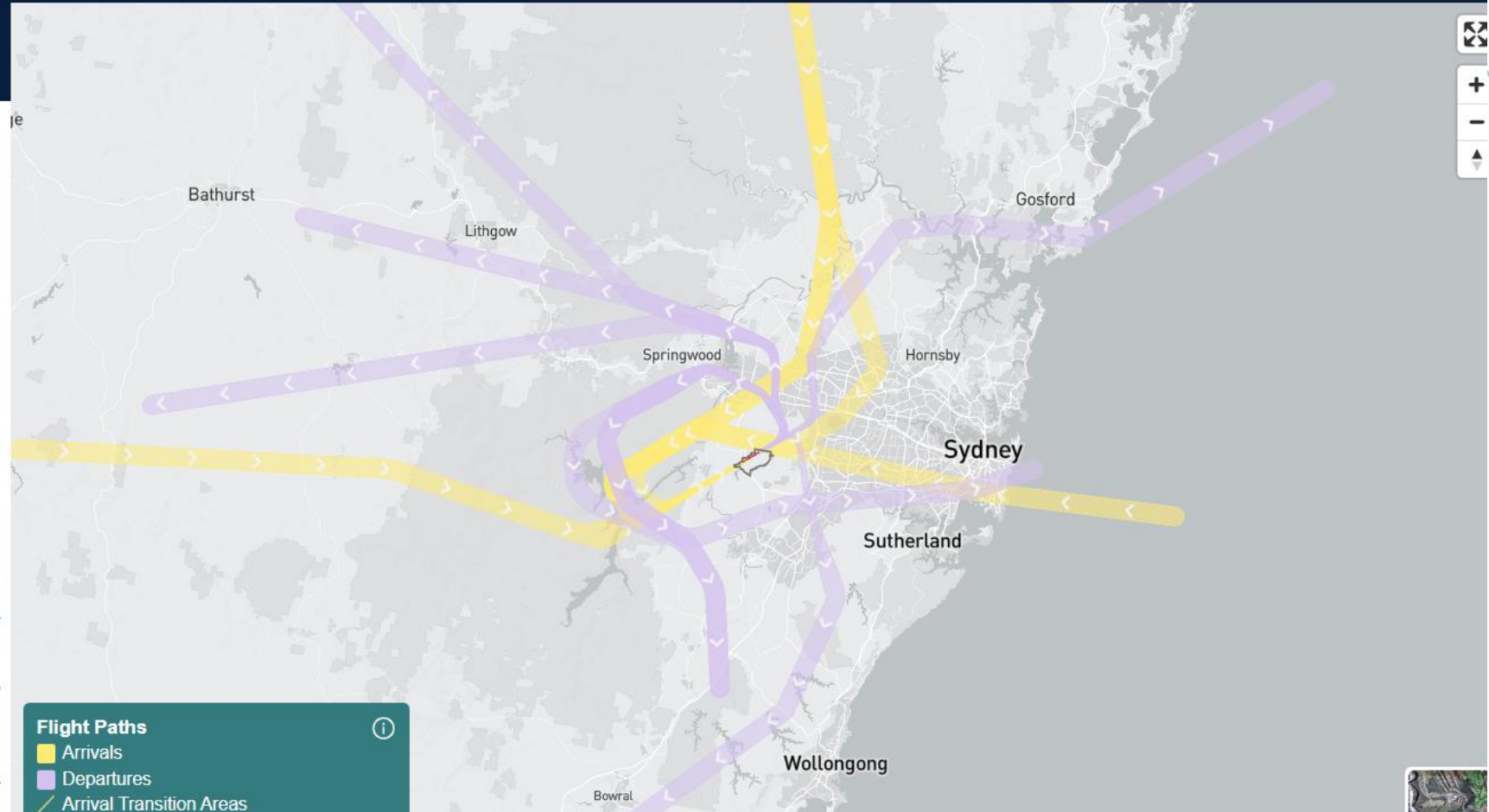
Show Noise Map

Show Sydney and Bankstown  
Airport Changes

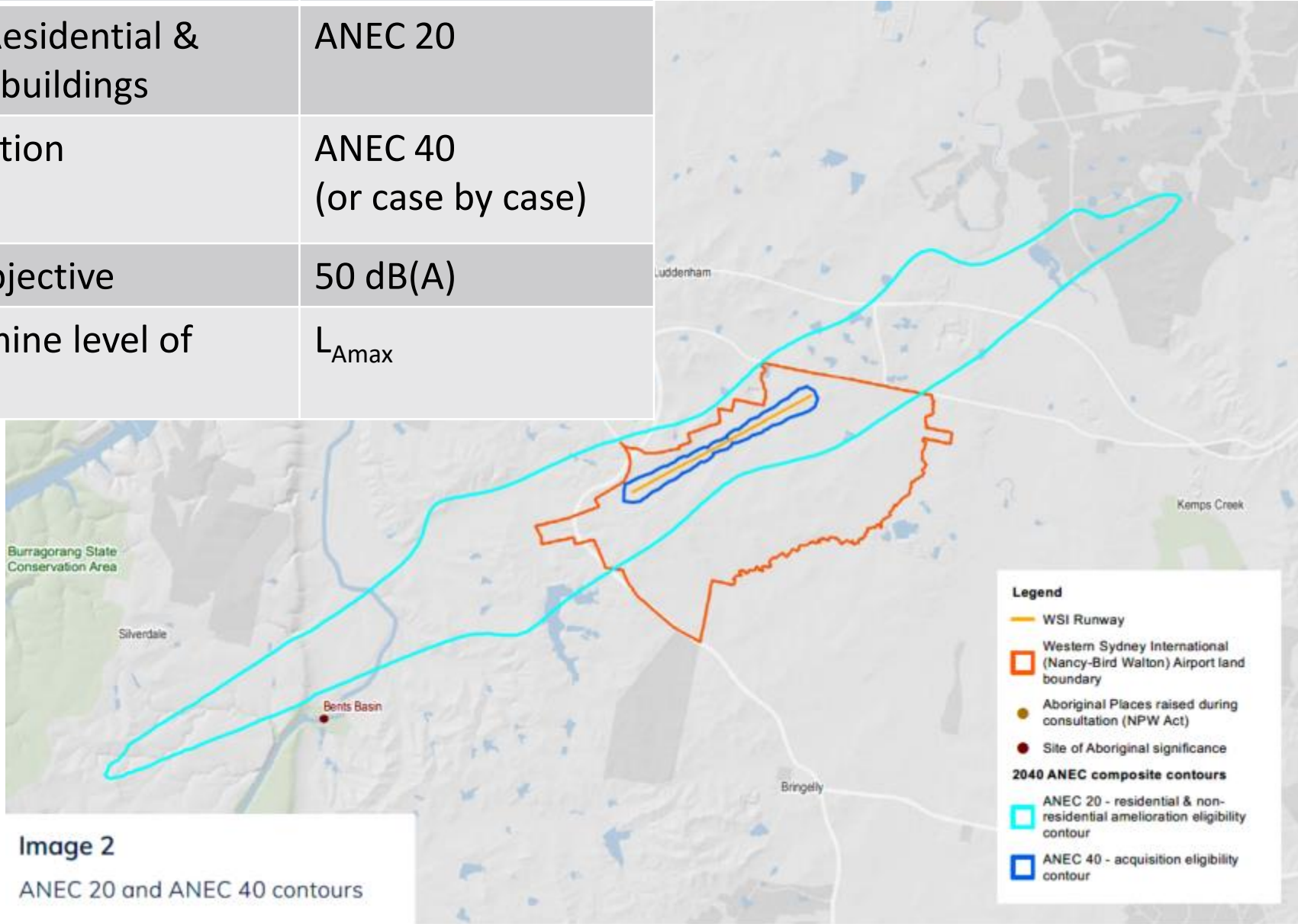
🔍 Type here or double-click on the map to select an address

Visit EIS submission portal

English  
(EN)



NIPA Eligibility Criteria	Metric
Treatments for Residential & Non-Residential buildings	ANEC 20
Property Acquisition	ANEC 40 (or case by case)
Internal noise objective	50 dB(A)
Metric to determine level of treatment	$L_{Amax}$



**Image 2**  
ANEC 20 and ANEC 40 contours

# EIS Assessment topics

## Air Quality and Greenhouse Gas

- All pollutants below identified thresholds in 2033
- Minor exceedances may occur close to WSI for particulate matter (PM<sub>2.5</sub>) and nitrogen dioxide (NO<sub>2</sub>) in 2055.
- Elevated particulate matter levels are due to existing elevated background levels. The contribution of WSI flight paths is considered insignificant.
- The predicted 1-hour average NO<sub>2</sub> levels are slightly above the NSW Environment Protection Authority (EPA) criteria, and are likely an overestimate

## Fuel jettisoning

- Fuel jettisoning is a rare occurrence that has no impact at ground level when conducted in accordance with relevant procedures in *Airservices' Manual of Air Traffic Services*.



# EIS Assessment topics

## Landscape and visual amenity

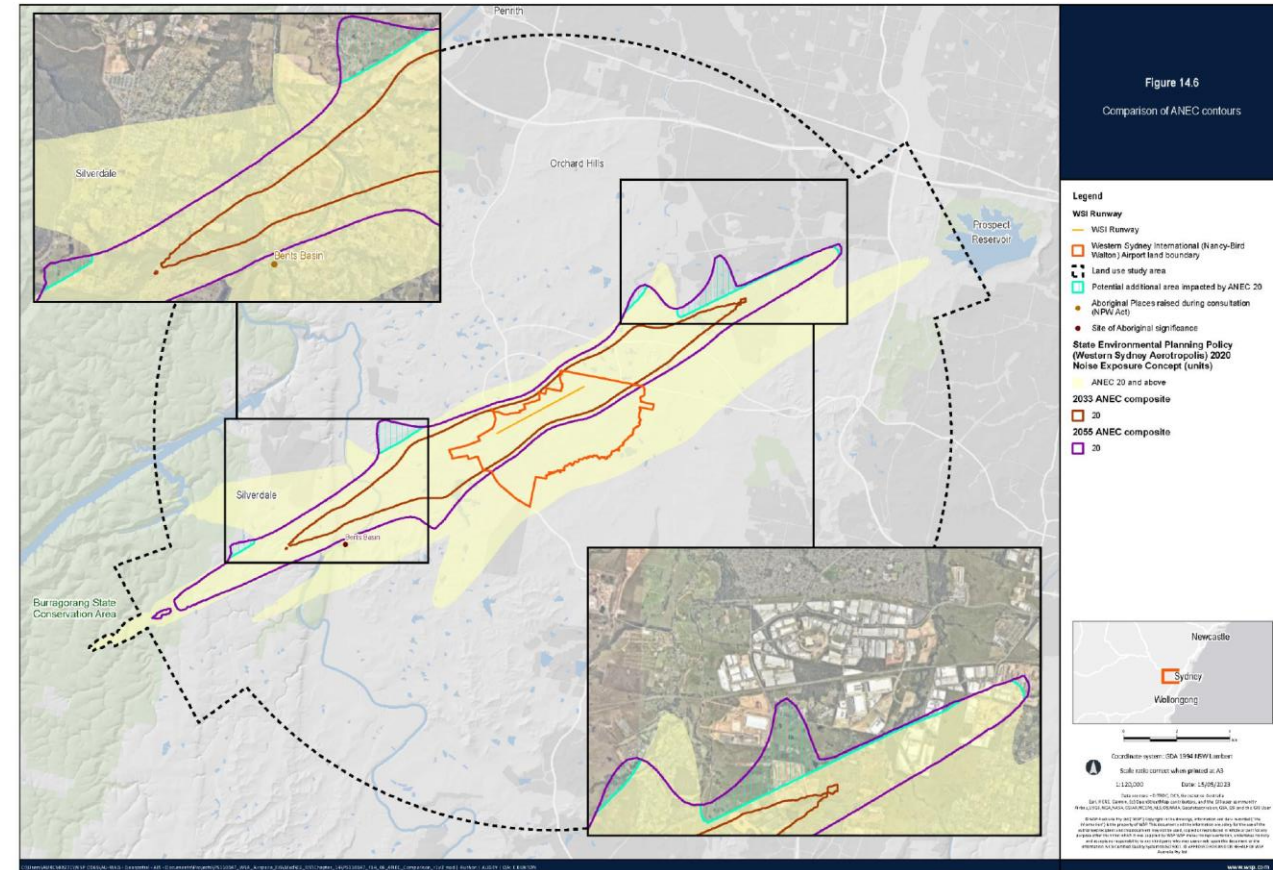
- Impacts at certain Greater Blue Mountains Area (GBMA) lookouts (Echo Point and The Walls) have been assessed as 'high-moderate' in 2055
- The magnitude of visual change was deemed to be 'low', as aircraft will be at a considerable distance and altitude when seen from these lookouts, however the high-moderate impact rating reflects the very high visual sensitivity of these locations.
- All other GBMA viewpoints were assessed as either 'moderate', 'moderate-low' or 'negligible' impact.
- Viewpoints in Kemps Creek and Luddenham Village were also assessed as high-moderate impact in the 2055 scenario based on high frequency of expected overflight.



# EIS Assessment topics

## Land Use

- Land use planning controls are already in place, based on the long-term, around dual-runway Australian Noise Exposure Concept (ANEC) prepared for the 2016 EIS.
- An ANEC contour for single-runway operations in 2055 was prepared for this EIS, and extends slightly beyond the current prescribed contour in a limited number of areas.
- Any updates to existing planning protections would be based on a revised dual-runway ANEC, due to be prepared during the detailed design phase.





# EIS Assessment topics

## Biodiversity

- Bird and bat strikes may occur intermittently in the vicinity of WSI, but the level of impact has been assessed as 'low/not significant'.
- Indirect impacts considered in the assessment include noise, light spill, air quality, water quality and fuel jettisoning.
- Aircraft noise has the potential to cause physiological or behavioural changes in certain species, however the impacts in relation to this project have been assessed as low/not significant.
- All other indirect impacts were assessed as negligible.

## Greater Blue Mountains Area (GBMA)

- The project would not have a significant impact on the attributes identified for each of the World Heritage criteria that affords the GBMA its Outstanding Universal Value. These criteria are:
  - ongoing evolutionary processes
  - biological diversity
- The project would not impact the overall integrity of the GBMA, which is another key component of the World Heritage listing.

# EIS Assessment topics

## Economic

- Flight paths are integral to realising the significant economic and employment effects of WSI for the local and regional economy.
- Increased access to key tourist destinations is considered to outweigh the potential adverse amenity impact of the flight paths.
- Aircraft noise may result in adverse impacts to residential property values in some areas close to WSI. Dwellings within the N70 contour (and outside the ANEC 20) are expected to have a low level of impact. Potential losses are expected to be recovered in 6 months due to growth in real capital gain.
- Changes to airspace arrangements to accommodate the operation of WSI are also expected to have an economic impact on general aviation users, particularly flight training operators at Bankstown Airport. This impact has been estimated to be in the order of \$15 million per annum.

# EIS Assessment topics

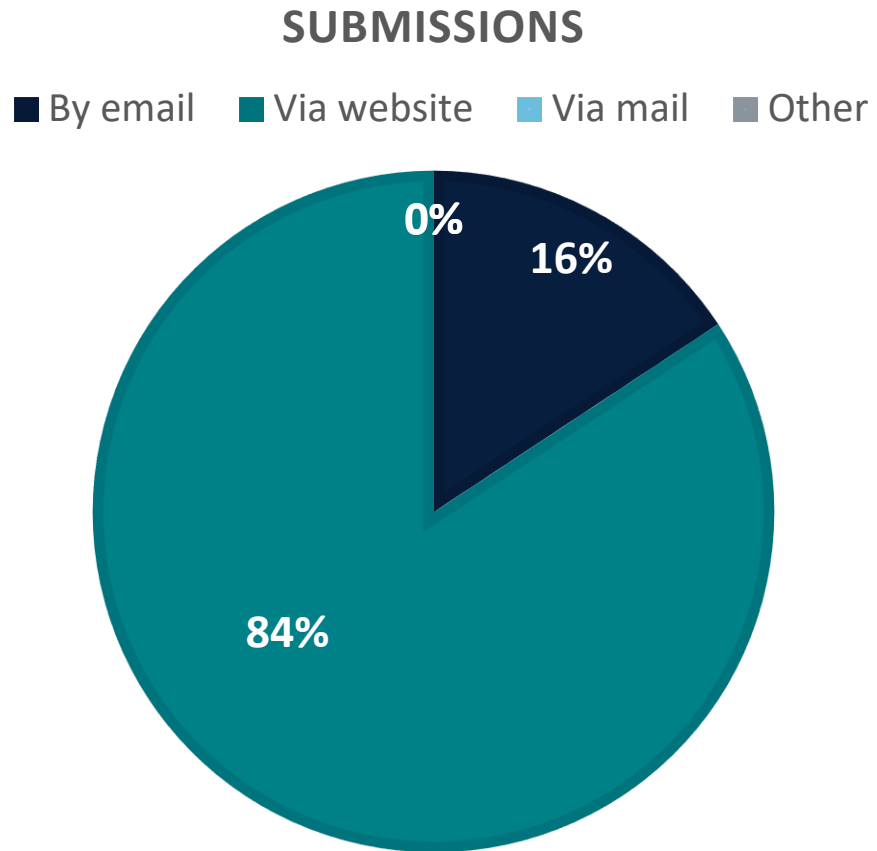
## Human health

- The assessment did not identify any significant risks to community health associated with air quality changes because of the project.
- In locations close to the WSI runway and below the immediate arrival and departure flight paths, aircraft noise has the potential to result in increases in sleep disturbance, annoyance and to a lesser degree, learning delays for children.
- The affected areas are mostly located within the ANEC 20 contours, which is estimated to contain less than 500 residents by 2040.
- The ANEC 20 area is already subject to planning controls on noise sensitive developments including new residential developments, schools and childcare centres, and meets the eligibility criteria for the consultation draft noise insulation and property acquisition policy, which will be a key mitigation to these potential impacts.
- Mitigation measures identified throughout the draft EIS would result in risks to community safety and health that are considered low and acceptable.

# Draft EIS submissions

Draft EIS released <b>4 weeks ago</b>	24 October 2023
Submissions due in <b>10 weeks</b>	31 January 2024
<b>Total submissions received so far</b> (24 October 2023 – 19 November 2023)	<b>280</b>

# Breakdown



## Submissions by postcode (where provided)

1. 2752 (Silverdale, Warragamba) – 35 submissions
2. 2747 (Kingswood, Werrington) – 19 submissions
3. 2745 (Glenmore Park, Luddenham) – 17 submissions
4. 2750 (Penrith, Emu Plains) – 17 submissions
5. 2777 (Springwood, Winmalee) – 17 submissions

# Top themes

- 24 hour operations / no curfew
  - Aircraft noise
- Draft noise insulation and property acquisition policy
  - Concern in N70 areas
  - Noise insulation treatment requests in areas outside draft guidelines
- Flight path location concerns
  - Silverdale, Penrith, Blue Mountains, St Clair



# Online activity

## Aircraft Overflight Noise Tool

New users since draft EIS release (24 Oct – 19 Nov)	25,000
New users since flight paths release (27 Jun – 19 Nov)	271,000

### Top searches by postcode since draft EIS release

1. 2745 (Glenmore Park, Luddenham, Mulgoa, Wallacia)
2. 2153 (Baulkham Hills, Bella Vista, Norwest)
3. 2570 (Camden, Oran Park)
4. 2750 (Penrith, Emu Plains)
5. 2747 (Kingswood, Werrington, Caddens)

## WSI Flight Paths website

Users since draft EIS release (24 Oct – 19 Nov)	65,914
--	--------

[www.wsiflightpaths.gov.au](http://www.wsiflightpaths.gov.au)

# What's happening next?

- Ongoing submissions analysis
  - Submissions report in the final EIS will respond to issues raised
- Continuing engagement activities
  - Community information sessions and stalls, landowner meetings, stakeholder briefings
- Updating Noise Tool
  - with WSI flight paths and noise summary report extract
- Dubbing flight paths and EIS videos
  - into top 5 non-English languages used in Western Sydney
- Airservices supplementary engagement and letterbox drop





**Australian Government**

**Department of Infrastructure, Transport,  
Regional Development, Communications and the Arts**

# Morning tea break





**Australian Government**

**Department of Infrastructure, Transport,  
Regional Development, Communications and the Arts**

# Update from the Air Navigation Service Provider

Annette Dittmar, Senior Advisor Community Engagement, Western  
Sydney International Airport Program, Airservices Australia



# Western Sydney International (Nancy-Bird Walton) Airport

## Airservices Australia Update

FOWSA Meeting 23 November 2023

## Program of Airservices Supplementary Engagement

Tool	Reach	Timing	Comment
Sydney-wide mailout	Relevant LGAs and communities	Mid/late November	Distribution to 1.5 million addresses via Australia Post
1x Pop up stall 7x Drop-in sessions	Communities who may notice airspace changes	28 November – 7 December 2023	Utilising Department collateral (posters/brochures) Advertised on Department's website, email alert, local social media Feedback will be captured in Department's EIS channels
Email notification	Airservices NCIS database KSA, Bankstown, Camden and Richmond airports	Late November 2023 Mid-January 2024	Promote face to face sessions Call for submissions



# Greater Sydney Mailout

## Approach / Rationale

- Current mix of communications is largely successful in reaching members of the community who engage with mainstream media and/or are active on social media.
- There remains a cross-section of the community which requires a more direct approach.
- Feedback from communities from previous campaigns and projects.
- Conduct an awareness raising mailout to all potentially impacted LGAs across Greater Sydney.
- Inform people that they may be impacted by WSI flight paths or other airspace changes.

## Benefits

- Increases community engagement reach.
- Alerts communities to potential airspace changes and opportunities to be consulted.
- Demonstrates we have listened to community feedback that letterbox drops are a good way to reach ‘everyone’.
- Working as one government to encourage communities to provide feedback to the draft EIS.
- One “whole of the city” mailout will reduce the risk that potentially impacted communities will not be informed.

# Greater Sydney Mailout - Flyer

## Have your say and make a submission to the draft EIS

Have your say and make a formal submission during the public exhibition of the draft EIS:

-  Online [wsiflightpaths.gov.au](http://wsiflightpaths.gov.au)
-  Email [eis.submissions@infrastructure.gov.au](mailto:eis.submissions@infrastructure.gov.au)
-  Post Attn: WSI Flight Paths Team, GPO Box 594, Canberra ACT 2601

Visit [wsiflightpaths.gov.au](http://wsiflightpaths.gov.au) to:

- access the Aircraft Overflight Noise Tool to view the preliminary flight paths in more detail
- find out more about the project, download brochures and FAQs
- read and download the draft EIS

If you have any questions, please call the Flight Paths Community Engagement Team on **1800 038 160** or at [wsiflightpaths@infrastructure.gov.au](mailto:wsiflightpaths@infrastructure.gov.au)



Scan the QR code to access the online community portal

Image credit:  
Western Sydney International Airport



## Preliminary flight paths and airspace design for Western Sydney International (Nancy-Bird Walton) Airport

Airservices Australia and the Federal Department of Infrastructure, Transport, Regional Development, Communications and the Arts are working together to develop preliminary flight paths for Western Sydney International (Nancy-Bird Walton) Airport, including changes to airspace arrangements for other Sydney airports.

The draft Environmental Impact Statement (EIS) on the preliminary flight paths for Western Sydney International (Nancy-Bird Walton) Airport is now on public exhibition. The draft EIS examines the noise, social and environmental impacts of the proposed flight paths.

We invite you to view the draft EIS and provide your feedback on the proposed flight paths.

### You can view the draft EIS:

- online at [wsiflightpaths.gov.au](http://wsiflightpaths.gov.au)
- at the NSW State Library, Penrith City Library and other council libraries across Greater Sydney and the Blue Mountains. Visit [wsiflightpaths.gov.au](http://wsiflightpaths.gov.au) or call 1800 038 160 to find your nearest location.

The introduction of new flight paths may change where aircraft operate over the Greater Sydney area.

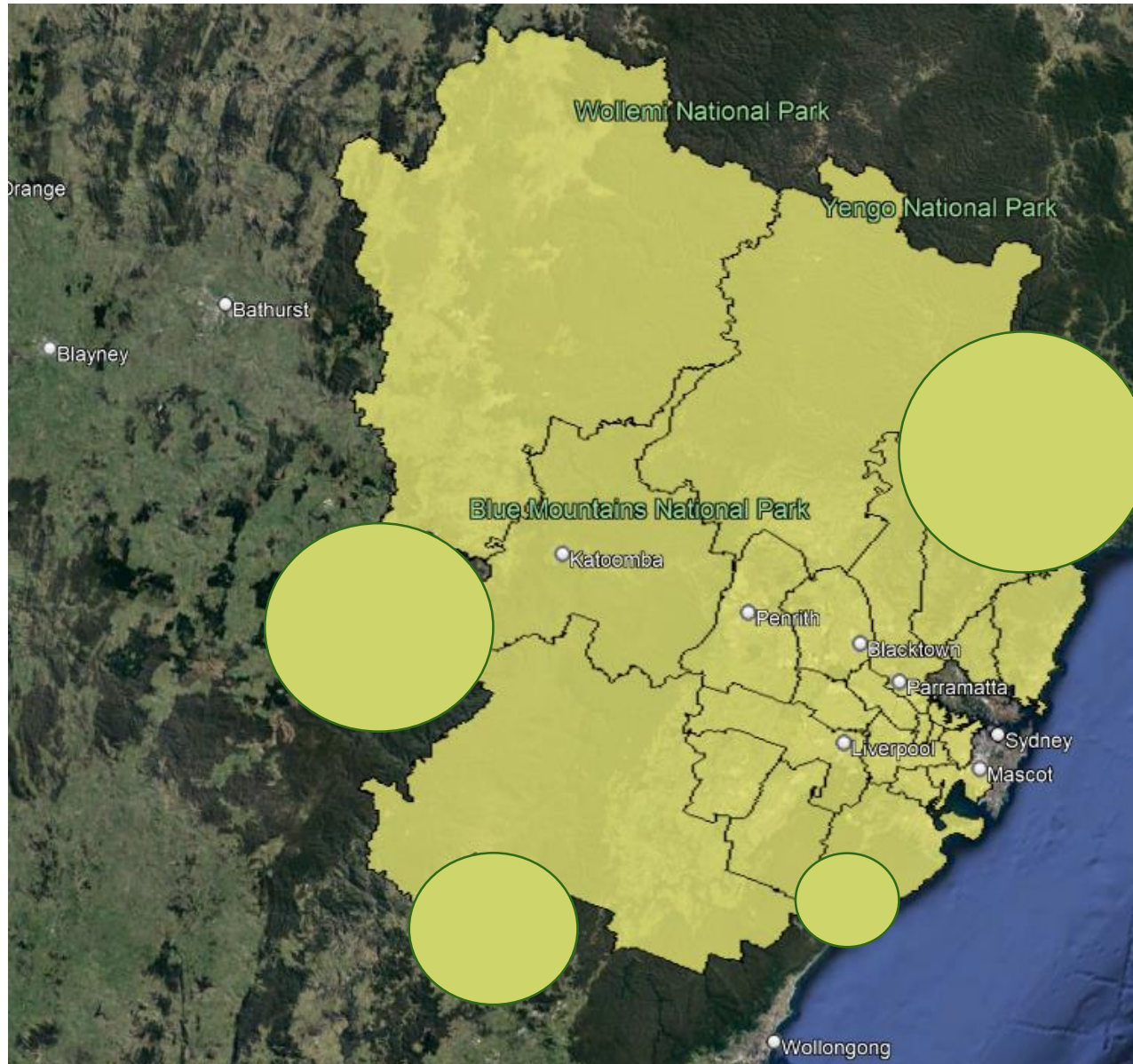


Australian Government

Department of Infrastructure, Transport,  
Regional Development, Communications and the Arts

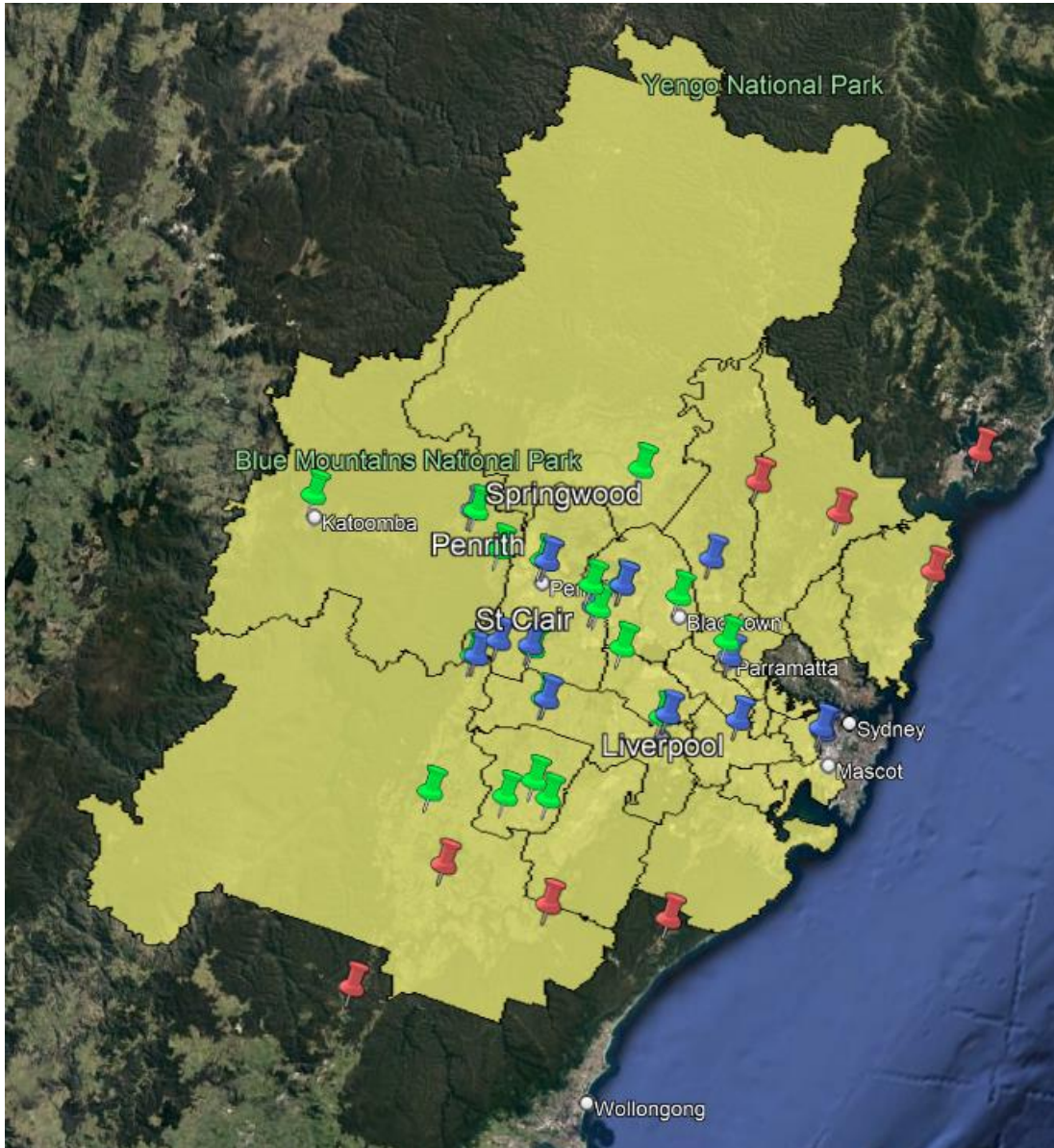


# Greater Sydney Mailout- Distribution



- 26 LGAs
- Lower Central Coast area
- Helensburgh area
- Hilltop area
- Oberon area

## Face to Face engagement – additional locations



- Appin – Monday 4 Dec
- Berowra – Wednesday 29 Nov
- Glenorie – Monday 28 Nov
- Helensburgh – Wednesday 6 Dec
- Hilltop – Tuesday 5 Dec
- Mona Vale – Sunday 3 Dec
- Picton – Thursday 30 Nov
- Woy Woy – Thursday 7 Dec

Thank you

# Update from airport operator

Katy Hannouch, WSA Co.





An aerial rendering of the Western Sydney International (Nancy-Bird Walton) Airport. The image shows a large, modern terminal building with a blue roof and glass facade, surrounded by a vast tarmac area with numerous aircraft parked at gates. The airport is set in a green, landscaped environment with roads and parking areas. The text "Western Sydney International (Nancy-Bird Walton) Airport" is overlaid in white on the left side of the image.

# Western Sydney International (Nancy-Bird Walton) Airport

Forum on Western Sydney Airport  
November 2023



**Western  
Sydney  
Airport**



# First Nations

## Friday 10 November - SouthsCare Opportunity Hub

WSI supported and participated with the Department of Agriculture, Fisheries and Forestry and Border Force at the Liverpool career expo, focusing on elevating job opportunities and pathways for employment for First Nations communities.

## Saturday 18 November - Elevated Cultural Festival, Mt Drutt

WSI's supported and attended the day which was aimed at providing a platform for young Pacifica and First Nations students to embrace their heritage, creating a sense of pride and belonging.

# Experience Centre

- Current period 1 Oct- 21 Nov (seven weeks)
- 5,037 visitors
- Total Visitors 60,305 since opening
- Satisfaction score 89%





# Community Engagement Overview

## 7 Career Expos

- TAFE NSW Liverpool, The Ponds High School, The Future Path Expo, Liverpool Opportunity Hub, VET Summit, Kimberwalli

## 3 Community Activations

- Cranebrook Family Day, Deepavali Festival (Diwali), Elevated Cultural Festival

## 3 CSIRO Generation STEM workshops

- Marian Catholic College, Norwest Christian College, Nepean Creative and Performance School

## Mentoring

- ABCN My Career - Colo High School
- The Smith Family – Liverpool High School

## 2 TAFE NSW – Aviation and Business

- Youth engagement strategy TAFE students

## 7 School visits and Mock Interviews

- Burwood Girls High School, James Meehan High School, Penrith Christian School, Middleton Grange Public School, St Josephs Trade School, Heathcote High School, Northmead Creative and Performing Arts High School

## First Nations Taking Off Program with Acciona and CPB

- Plumpton, Campbelltown Performing Arts, Elderslie, Sarah Redfern, John Terry, Ingleburn, Robert Townsend and Eaglevale High Schools

WSI joined forces with members of local Rotary Clubs to undertake a major tree planting project to rehabilitate the local environment. These areas have been allocated for biodiversity rehabilitation and for the protection of existing aboriginal heritage.

## National Youth Poetry Slam

The Youth Poetry Slam is Australia's largest regular poetry slam. The Youth Poetry Slam is a pioneer in the arts scene – championing young, diverse voices through high school poetry programs, slam competitions, festivals and in 2023, WSA is a sponsor of the National Youth Poetry Slam contributing to the participation of young people from low socio-economic backgrounds.

## Western Sydney Women Awards

Western Sydney Women annual signature awards event are the only awards program representing women at all stages of life, business and careers across the greater Western region. WSI is the sponsor of the Western Sydney Women in STEM Award to recognise the for their work and achievements.

## Supported 15 flightpath pop-ups

- 7 Community info sessions (Warragamba, Blaxland, Penrith, Bringelly, Sydenham, Kingsgrove, Bankstown, )
- 6 Information Stalls (Springwood, Luddenham, Marrickville, Oran Park, Auburn, Plumpton)
- 2 Landowners session at WSI Experience Centre





An aerial rendering of the Western Sydney International Airport terminal and tarmac. The terminal is a long, modern building with a blue roof and glass facade, featuring multiple boarding bridges. Numerous commercial aircraft are parked at gates along the terminal. The tarmac is paved with yellow markings and has several aircraft taxiing or parked. The surrounding area includes green spaces, roads, and a control tower in the distance.

# Western Sydney International (Nancy-Bird Walton) Airport



**Western  
Sydney  
Airport**



# Other Business

