



Australian Government

**Department of Infrastructure, Transport,
Regional Development, Communications and the Arts**

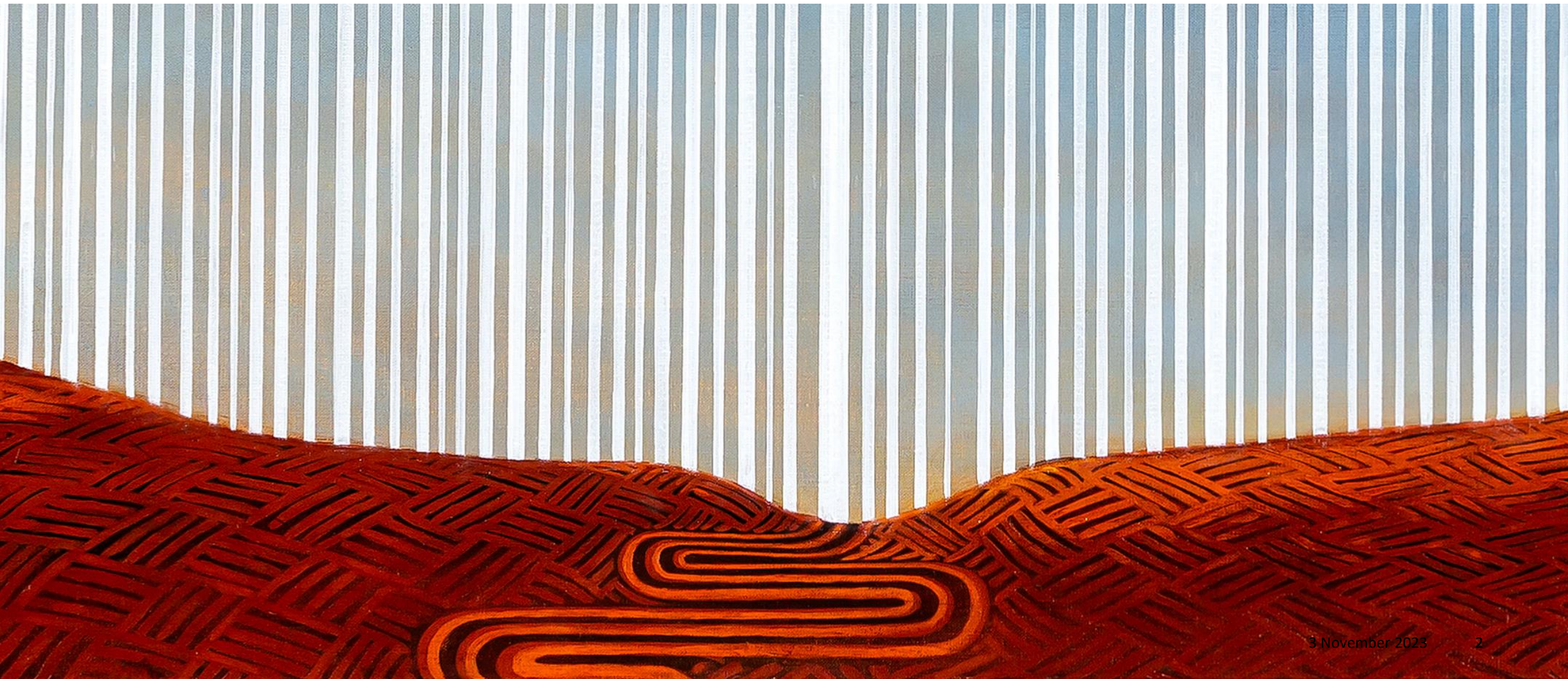
Forum on Western Sydney Airport (FoWSA)

28 September 2023



Acknowledgement of Country

I would like to begin by acknowledging the Traditional Owners and Custodians of the land on which we meet today, and pay my respects to their Elders past, present and emerging. I extend my respect to Aboriginal and Torres Strait Islander people joining us today.



3 November 2023

2

1. Welcome from the Chair

Ms Lee de Winton

Agenda

No.	Item	Presenter	Time
1.	Welcome from the Chair	Lee de Winton	9:30AM
2.	Action items	Lee de Winton	9:35AM
3.	Department update <ul style="list-style-type: none">summary of engagement for previous phase of engagement (preliminary flight paths release)update on the Aviation White Paper	Department	9:45AM
4.	Community engagement on the preliminary flight paths	Department	10:05AM
5.	Draft EIS release and ambient noise monitoring	WSP	10:45AM
6.	Draft EIS release engagement plan		
7.	Other business	All	11:00AM
	Meeting close		11:15AM

2. Actions from Previous Meeting

Meeting 20, 27 June 2023

No.	Action Item	Status
1.	FoWSA Secretariat to provide members with weekly updated on planned community engagement activities.	Ongoing
2.	The Department to ensure the release of the preliminary flight paths can be found on its website at www.infrastructure.gov.au	Ongoing
3.	FoWSA to receive an update from Transport for NSW next year on the transport projects to support the opening of WSI.	Open.
4.	FoWSA to receive briefing from WPCA on infrastructure activity in Western Sydney at future meeting.	Open.

3. Departmental Update

David Jansen

Assistant Secretary, Western Sydney Airport Policy and Regulatory Branch

Department of Infrastructure, Transport, Regional Development,
Communications and the Arts

4. Draft EIS and ambient noise monitoring

Paula Bradshaw

WSP Australia

What we're discussing today



Draft EIS process

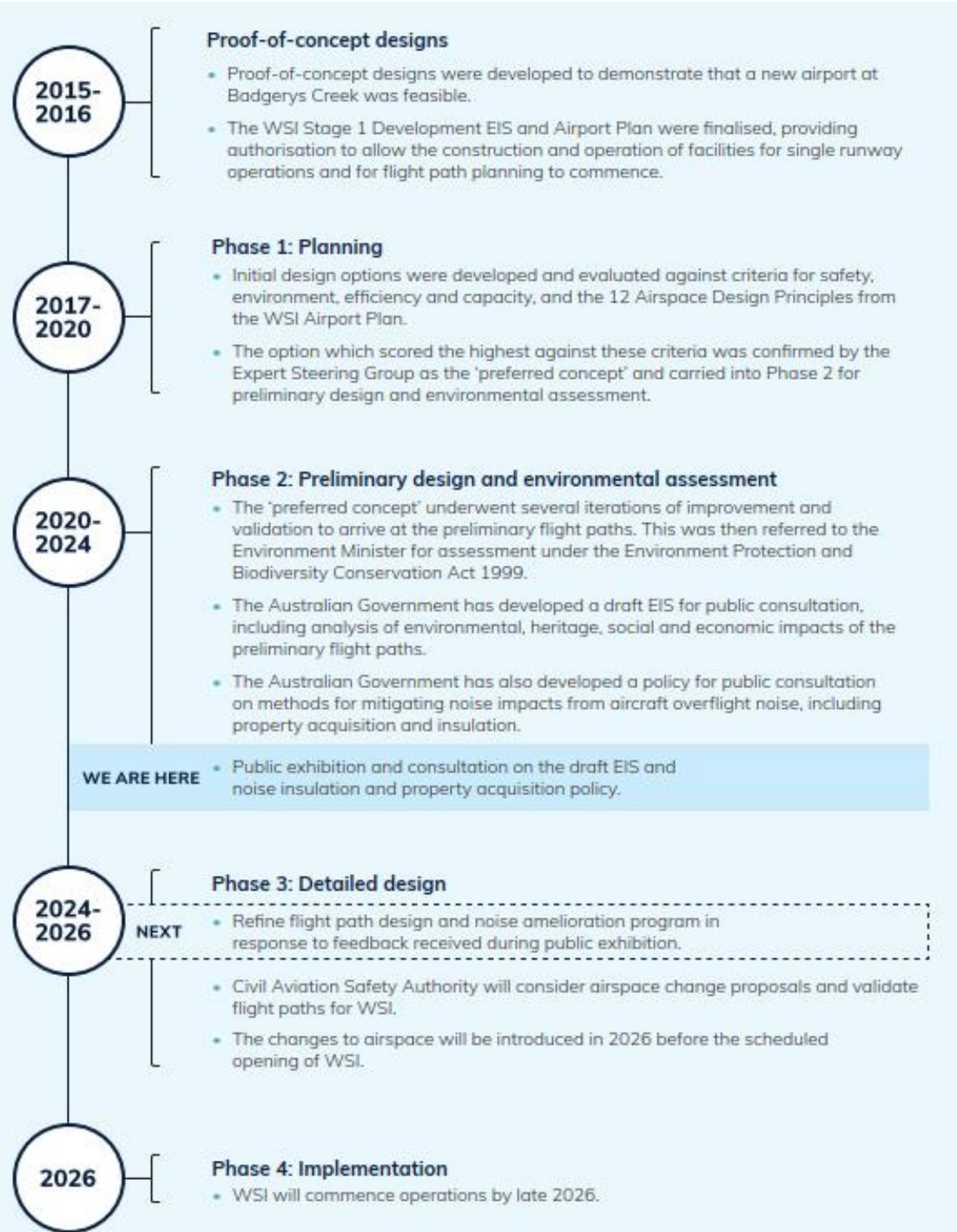


Noise monitoring

Draft EIS process



Project development



What the Draft EIS covers

Draft EIS prepared in accordance with project-specific EIS Guidelines issued by the Australian Minister for the Environment in 2021.

Four main parts:

Part A – Background

- Introduces the project; strategic context and need; project settings; and the statutory framework

Part B – The project

- Includes chapters relating to the development of the project; project description; airspace terms; community and stakeholder engagement

Part C – Environmental impact assessment

- Includes 13 technical chapters assessing the impacts of the project

Part D – EIS Synthesis

- Overall findings of the assessment; project-specific mitigation measures, monitoring and environmental management

Supporting documents:

- 14 Technical papers
- 6 Appendices

Project overview
Strategic context and need
Airspace constraints
Planning and assessment process
Project development
Aircraft noise
Air quality and greenhouse gas
Aircraft hazard and risk
Land use
Landscape and visual amenity
Biodiversity
Heritage
Social
Economic
Human health
Facilitated impacts
Cumulative impacts
Matters of national environmental
Mitigation and management
Conclusions

Project overview



Overview	+
Key features of the project	+
Facilitated airspace changes (prior to WSI opening)	+

Further details of the key elements of the project are provided in Chapter 7 and Chapter 8 of the draft EIS.

[Download Chapter 7 \(The project\)](#)

[Download Chapter 8 \(Facilitated changes\)](#)

• Strategic context and need

Submissions process

- Formal submissions are recommended.
- Submissions can be made during the formal draft EIS exhibition period
Online <https://www.wsiflightpaths.gov.au/>, **email** or **post**.
- All submissions will be considered as the flight path design and EIS are finalised.
- **Option for anonymity or to enter submitter's details.**
- A Submissions Report will be developed as part of the finalisation of the EIS.
- Issues raised in submissions will be considered and responded to within the Submissions Report.
- Responses to individual submissions will not be provided as part of this process.





EIS assessments

The environmental impact assessment was undertaken to:

- address the relevant requirements of the Airports Act and the EPBC Act
- meet the requirements of the Minister's Guidelines (EPBC 2022/9143)
- be consistent with the EPBC Act Significant Impact Guidelines
- have regard to Airservices Standards (NOS)

Ambient noise monitoring



Ambient noise monitoring

Monitoring program designed and developed in response to feedback on the 2016 EIS and Minister's Guidelines section 6(b):

Undertake an ambient noise study in surrounding areas that may be affected by the proposed action and describe the findings in the context of land use and sensitive receivers.

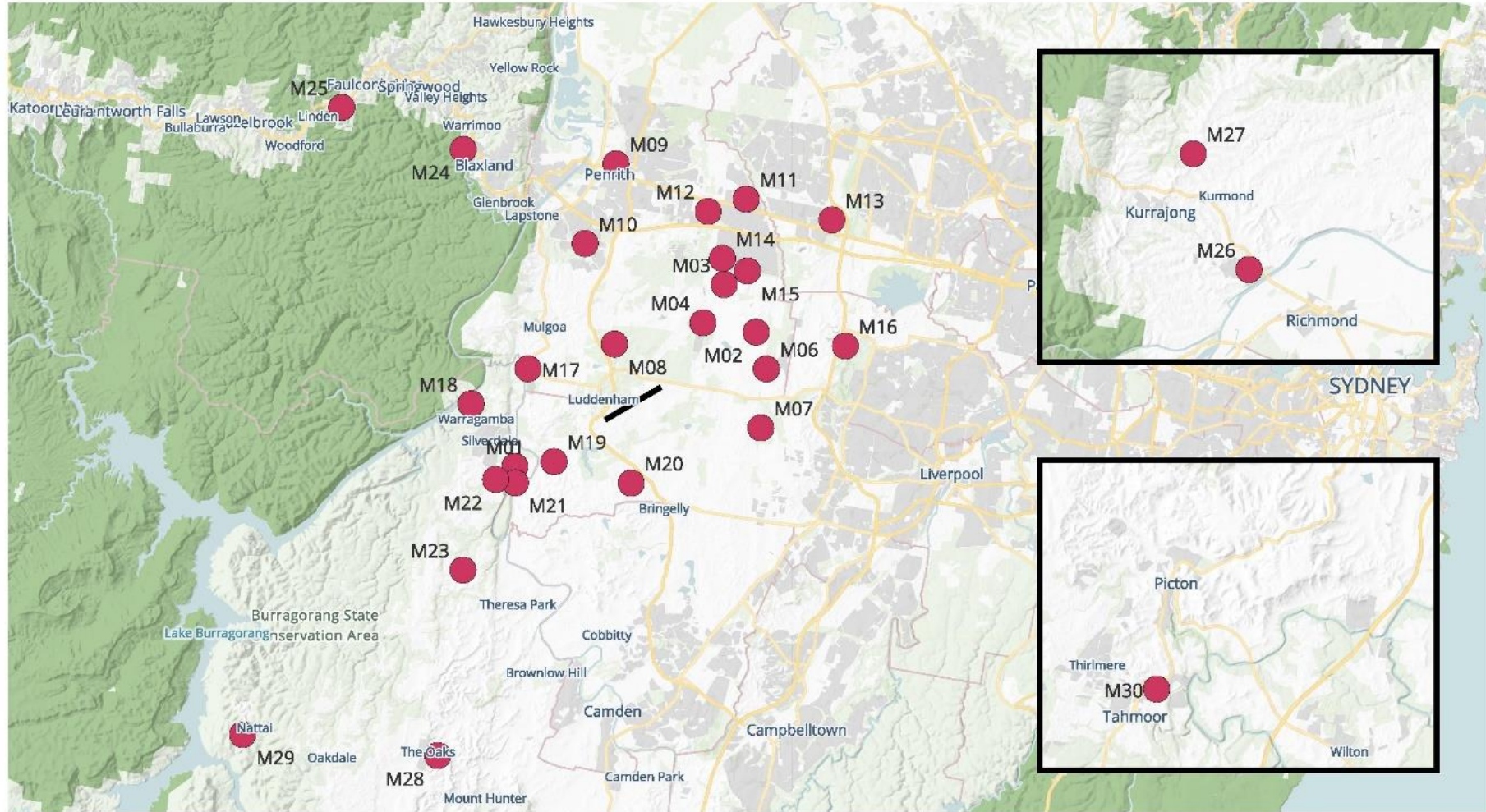
Selected areas and properties representative of land uses including:

- Residential (suburban)
- Recreational
- Industrial
- Rural

Monitoring:

- Gathering and analysing information to help inform the EIS (existing conditions)
- Undertaken in accordance with *Australian Standard 1055:2018 Acoustics – Description of environmental noise* and *NSW EPA – Noise Policy for Industry (2017)*

Ambient noise monitoring

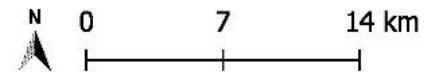


Noise Monitoring Terminals

LEGEND (dB(A))

● Noise Monitoring Terminal

— Runway 05-23



Example data sheet: M02 North east departure

Background Noise Monitoring

Location	M02 North East Departure - 141 Aldrington Road	Project	Western Sydney International Airport (WSI)
Test Type	Unattended noise logging with attended on-site monitoring	Engineer	LE & MUA

Unattended Equipment				Attended Equipment					
Equipment	Model:	ARL Ngara	Serial No. :	878238	Equipment	Model:	NTi XL2	Serial No. :	A2A-18160-E0
Calibration	Pre:	94.0 dBA	Post:	94.3 dBA	Calibration	Pre:	93.7 dBA	Post:	93.6 dBA
Microphone	Position:	Free field	Height:	1.2 m	Microphone	Position:	Free field	Height:	1.5 m
Interval:	15 min			Interval:	15 minutes				

Date Start	Tuesday, 13 Sep 2022
Date End	Wednesday, 12 Oct 2022
No. of days	30
No. of nights	29

Weather	
Station	BoM
Station Info	Horsley Park Equestrian
Distance	< 10 km
Threshold*	Wind 5 m/s, Rain 0mm /hr

*for exclusion of dataset



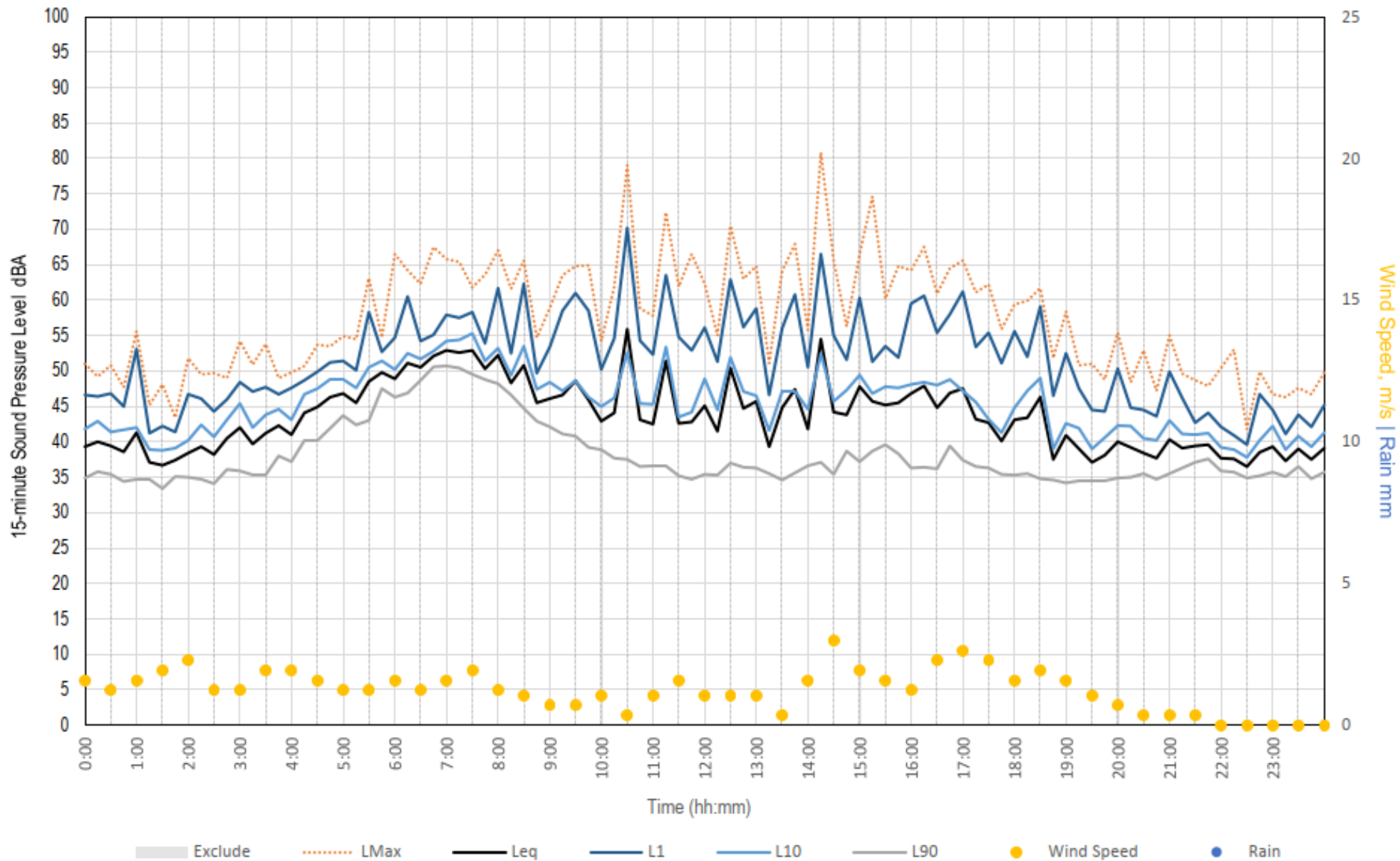
Site Notes
<p>Logger placed at fence line of property backing onto rural property.</p> <p>Located ≥ 3 metres away from any reflective structures other than the ground (e.g. house facade). Fence will not have a notable reflective effect due to it being a wire fence with large gaps.</p>

Example data sheet: M02 North east departure

General comments on attended monitoring / Characteristics of noise environment	
Day	
<i>Ambient noise</i>	Intermittent flow of traffic on Aldrington Road. Intermittent birds from the nearby trees. Several aircraft flying overhead with an approx. duration of 30 sec to 1 min with maximum sound levels in range of 42 to 52 dBA.
<i>Background noise</i>	Traffic at distance.
Evening	
<i>Ambient noise</i>	Intermittent birds from the nearby trees. Noises picked up from strong wind gusts. Occasional vehicles passing by on local streets. Movement in vegetation induced by wind (e.g. mostly grass). Several aircraft flying overhead with an approx. duration of 30 sec to 1 min with maximum sound levels in the range of 48 to 57 dBA.
<i>Background noise</i>	Constant sound of cicadas. Traffic at distance.
Night	
<i>Ambient noise</i>	Constant bird chirpings from nearby trees, varying in strength. Occasional vehicles passing by on nearby street. Several aircraft flying overhead with an approx. duration of 30 sec to 2 min with maximum sound levels in the range of 42 to 70 dBA.
<i>Background noise</i>	Constant sound of cicadas. Constant bird chirpings from nearby trees. Traffic at distance.

Measured Noise Levels - M02 North East Departure - 141 Aldrington Road

Wednesday, 14 September 2022



Example data sheet: M24 Blaxland

Background Noise Monitoring

Location	M24 Blaxland - 51 Bridge Street	Project	Western Sydney International Airport (WSI)
Test Type	Unattended noise logging with attended on-site monitoring	Engineer	NM & MUA

Unattended Equipment					Attended Equipment				
Equipment	Model:	ARL Ngara	Serial No. :	878236	Equipment	Model:	NTi XL2	Serial No. :	A2A-18160-E0
Calibration	Pre:	93.7 dBA	Post:	93.9 dBA	Calibration	Pre:	94.1 dBA	Post:	93.9 dBA
Microphone	Position:	Free field	Height:	1.35m	Microphone	Position:	Free field	Height:	1.5 m
Interval:	15 min				Interval:	15 minutes			

Date Start	Monday, 08 Aug 2022
Date End	Friday, 02 Sep 2022
No. of days	22
No. of nights	20

*Monitoring period not continuous

Weather	
Station	BoM
Station Info	Penrith Lakes AWS
Distance	≤ 15 km
Threshold*	Wind 5 m/s, Rain 0mm /hr

*for exclusion of dataset



Site Notes

Logger placed at east end of property backing onto rural area.

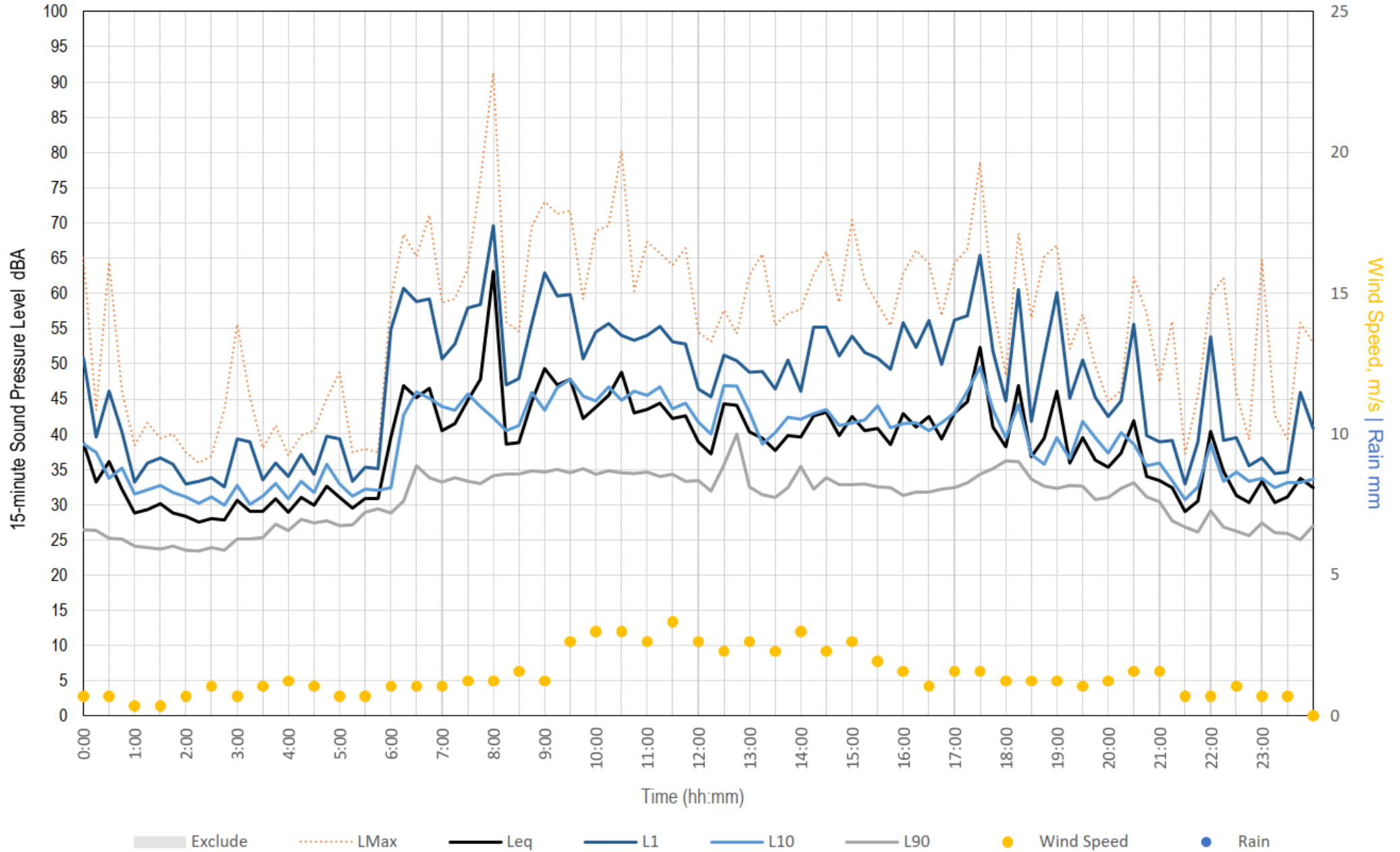
Located > 3 metres away from reflective surfaces other than ground (e.g. house facade and shed).

Example data sheet: M24 Blaxland

General comments on attended monitoring / Characteristics of Noise Environment	
Day	
<i>Ambient noise</i>	Strong wind gusts causing trees to rustle. Impulsive noise from animals (e.g. intermittent barking from neighbour's dog), and occasional bird song. Occasional loud truck at the Great Western Highway (GWH) audible. One aircraft (helicopter) flying overhead with maximum noise level in the range of 57 to 60 dBA, audible for a duration of 10 min.
<i>Background noise</i>	Movement in vegetation induced by wind (e.g. tree leaves rustling and grass moving). Distant traffic noise from GWH.
Evening	
<i>Ambient noise</i>	Various impulsive animal noises (e.g. toad croaks, bird song, dog bark). Occasional sound of vehicles passing at street. Stirring strong wind gusts. Several aircraft flying overhead with an approx. duration of less than a 1 min and with a maximum sound levels ranging from 49 dB to 52 dBA.
<i>Background noise</i>	Movement in vegetation induced by wind (e.g. tree leaves rustling and grass moving). Distant traffic noise from GWH.
Night	
<i>Ambient noise</i>	Intermittent birds chirping on trees. Occasional sound of vehicles passing at street. Stirring strong wind gusts. A few aircraft movements noted at a distance in the early morning hours.
<i>Background noise</i>	Movement in vegetation induced by wind (e.g. tree leaves rustling and grass moving).

Measured Noise Levels - M24 Blaxland - 51 Bridge Street

Tuesday, 09 August 2022



Monitoring summary: average

ID	Area	Latitude	Longitude	L _A eq (dB(A))		
				Day	Evening	Night
M01	South West Departure (Wallacia)	-33.92	150.63	58	49	43
M02	North East Departure	-33.84	150.80	63	47	44
M03	North East Runway	-33.82	150.77	67	53	53
M04	Twin Creeks	-33.84	150.76	49	47	45
M06	Mount Vernon	-33.86	150.80	51	53	50
M07	Kemps Creek Nature Reserve	-33.90	150.80	58	45	45
M08	Luddenham	-33.85	150.70	62	59	58
M09	Penrith	-33.75	150.70	52	46	42
M10	Glenmore Park	-33.79	150.68	57	51	46
M11	Oxley Park	-33.77	150.79	72	47	44
M12	St. Marys	-33.78	150.76	57	50	44
M13	Rooty Hill	-33.78	150.85	54	47	46
M14	St. Clair	-33.80	150.77	57	45	49
M15	Erskine Park	-33.81	150.79	59	51	43
M16	Sydney Int. Equestrian Centre	-33.85	150.86	55	51	50
M17	Wallacia	-33.86	150.64	53	49	45
M18	Warragamba	-33.88	150.60	51	46	46
M19	Greendale	-33.92	150.66	49	50	45
M20	Bringelly	-33.93	150.71	52	48	44
M21	Bents Basin	-33.93	150.63	63	51	47
M22	Silverdale	-33.93	150.62	51	48	44
M23	Werombi	-33.98	150.60	58	47	45
M24	Blaxland	-33.74	150.60	50	42	42
M25	Linden	-33.72	150.52	51	45	43
M26	North Richmond	-33.58	150.71	53	47	41
M27	Kurrajong	-33.53	150.69	51	44	44
M28	The Oaks	-34.08	150.58	56	48	44
M29	Lake Burratorang	-34.07	150.45	46	42	44
M30	Tahmoor	-34.22	150.60	56	46	48

Aircraft noise observations – all sites

ID	Area	Latitude	Longitude	L _A max (dB(A))		
				Day	Evening	Night
M01	South West Departure (Wallacia)	-33.92	150.63	58	57	58
M02	North East Departure	-33.84	150.80	52	57	70
M03	North East Runway	-33.82	150.77	61	62	
M04	Twin Creeks	-33.84	150.76	54		
M06	Mount Vernon	-33.86	150.80	67	59	50
M07	Kemps Creek Nature Reserve	-33.90	150.80	65	50	46
M08	Luddenham	-33.85	150.70		50	
M09	Penrith	-33.75	150.70	59		
M10	Glenmore Park	-33.79	150.68	59		
M11	Oxley Park	-33.77	150.79	45	45	
M12	St. Marys	-33.78	150.76	59	59	
M13	Rooty Hill	-33.78	150.85	56	56	
M14	St. Clair	-33.80	150.77	56	40	
M15	Erskine Park	-33.81	150.79		49	
M16	Sydney Int. Equestrian Centre	-33.85	150.86	54	60	61
M17	Wallacia	-33.86	150.64	56	50	
M18	Warragamba	-33.88	150.60	53	42	52
M19	Greendale	-33.92	150.66	58	59	
M20	Bringelly	-33.93	150.71	56	54	49
M21	Bents Basin	-33.93	150.63	60	57	
M22	Silverdale	-33.93	150.62	56	56	
M23	Werombi	-33.98	150.60	60	52	37
M24	Blaxland	-33.74	150.60	60	52	
M25	Linden	-33.72	150.52	55	51	54
M26	North Richmond	-33.58	150.71	49		
M27	Kurrajong	-33.53	150.69	47		
M28	The Oaks	-34.08	150.58	61	55	
M29	Lake Burratorang	-34.07	150.45	50	47	
M30	Tahmoor	-34.22	150.60	53	58	64

Key Findings: a snapshot

Rural-residential areas

M01 Wallacia SW departure: low background noise levels with occasional traffic passbys on local roads. The local noise environment was dominated by natural sounds, with cicadas audible during evening periods, and birds audible during the night periods. Several aircraft passbys were observed overhead at this location with maximum noise levels observed to 35 to 58 dBA for durations of 30 seconds and one minute during the day, evening and night time periods.

Suburban

Penrith M09: ambient noise was affected by suburban traffic noises, several aircraft flyovers observed between 30 sec - 1 min up to maximum levels of 38 dB to 59 dBA during the day. Evening and night time ambient levels were influenced by local traffic and suburban hum, with no flyovers observed.

Recreational

Bents Basin Road Picnic Area (M21): aircraft noise levels in the range of 36 to 60 dBA for passbys between 30 sec - 1 min during the day, and between 43 dBA and 57 dBA during the evening. The background noise environment was typified by distant traffic during the day, cicadas during the evening and night time periods, typical of a suburban residential environment.

Twin Creeks (M04): dominated by natural sounds, with occasional vehicle passbys audible on local roads. Several flight passbys were noted, with maximum levels between 43 and 54 dBA for up to 30 sec during the day. During evening, several aircraft flybys were observed but not quantifiable over background noise levels associated with wind, natural noise and insect noise.

Industrial

Erskine Park M15: dominated by local industrial noise activities, local traffic and occasional mechanical plant noise from adjacent residences. Aircraft were observed during the day were not sufficient over ambient noise to quantify over other sources. During the evening period one passby of up to 49 dBA observed for approximately 1 min.

Questions



5. Draft EIS Engagement Plan

Deborah Palmer

WSP Australia

What we're discussing today



Recap on engagement
to date



Discuss the next phase
of engagement

Engagement principles

Principles



Prioritise the most heavily impacted



Take people on the design journey



Simplify the complex



Tailor communications and engagement to different audiences



Be direct



Respond to new information as it emerges

Phases

Engagement journey

Develop the engagement plan through interviews, consultation needs for the draft EIS, refinement with government stakeholders

PHASE 1: Discover and strategise

Mar – Sept 2022

Tranche 1 survey

Oct – Dec 2022

Build awareness within impacted communities and key stakeholders about the design process, timeframes and gather feedback on values and concerns to support the development of the draft EIS

PHASE 2: Build awareness and consult

PHASE 3: Prepare for public exhibition of the Draft EIS

Deepen impacted communities and key stakeholders' knowledge of the flight process by building understanding on matters covered in the upcoming draft EIS, setting expectations on public exhibition and how to give feedback

Jan – May 2023

Tranche 2 survey & focus group

PHASE 4: Release of the preliminary flight paths

Preliminary flight paths are released via an online interactive noise tool and online and face to face consultation is undertaken

Jun – Sept 2023



PHASE 5: Draft EIS public exhibition

Draft EIS exhibition, accessible and meaningful opportunities to understand flight paths and their impacts

TBC – TBC

PHASE 6: Response to submissions

Report on consultation outcomes




Tranche 3 survey

TBC – TBC

How we have undertaken engagement to date

Discover and strategise | Build awareness and consult | Prepare for public exhibition of the Draft EIS | Release of the preliminary flight paths

Community we have we spoken to, to date

-  During Phase 2 engagement, more than 2,600 people were engaged.
-  During Phase 3 engagement, more than 1,100 people were engaged.
-  During Phase 4 engagement, more than 1,400 people were engaged.

More than 700 community members have subscribed to the email updates database.

Phase 5 engagement: 12 identified Local Government Areas in Western Sydney and Blue Mountains

Draft EIS public exhibition: Engagement will prioritise the most heavily impacted



- Blacktown City Council
- Blue Mountains City Council
- Camden Council
- Campbelltown City Council
- Cumberland City Council
- Fairfield City Council
- Hawkesbury Shire Council
- Hill Shire Council
- Liverpool City Council
- City of Parramatta Council
- Penrith City Council
- Wollondilly Shire Council.

Phase 5 engagement

PHASE 5: Draft EIS public exhibition

Building awareness and encouraging the community to make a submission

Stakeholder briefings

Inform and engage

Leverage stakeholder networks

Share information with your audience

Posters

In places of interest

Social media

Geotargeted to local areas

Postcards

Distributed at train stations

Newspapers

Gazetted as public notices

Media

Media releases and briefings

Phase 5 engagement

PHASE 5: Draft EIS public exhibition

How to find out more: providing the information

Static displays

In local council areas

Stalls

Information in targeted areas

Online engagement

Online information session

Information sessions

Feedback from the community in local areas

Landholder engagement

For those eligible for the NIPA

Telephone, email and website

Responding to enquiries

New supporting material

New and refreshed printed information

- Preliminary flight paths
- Noise assessment
- Draft Noise Insultation and Property Acquisition Policy
- About the EIS process

Three animations

- Flight path design
- The Sydney airspace
- About the EIS process

New FAQs

Brochures and animations translated into the top five languages for Western Sydney

Australian Government
Department of Infrastructure, Transport,
Regional Development, Communications and the Arts

June 2023

Western Sydney International (Nancy-Bird Walton) Airport

Preliminary flight paths

The new Western Sydney International (Nancy-Bird Walton) Airport (WSI) is set to open for freight, domestic and international travellers by late 2026.

The Australian Government has released the preliminary flight paths for WSI for the community to view. These flight paths have yet to be assessed and approved by the regulatory authority and will be subject to a formal statutory planning and consultation period later this year.

View the preliminary flight paths

Designing flight paths is highly technical work. The work involves thorough validation and review to ensure aircraft can use the flight paths. The design has to balance the needs of the community, environment, industry and users of the Greater Sydney airspace, while maintaining safety as the priority.

You are encouraged to visit the **Aircraft Overflight Noise Tool**, which can be accessed through the **Online Community Portal**, to see the preliminary flight paths and the predicted aircraft noise impacts. We understand that you may have a wide range of questions about the preliminary flight paths, and are available to speak with you at our Community Information and Feedback Sessions, on **1800 038 160** or via email at wsflightpaths@infrastructure.gov.au. Detailed information is also available on our **Online Community Portal**.

Approvals process

Formal feedback for the preliminary flight paths can be provided during the draft Environmental Impact Statement (EIS) exhibition period in the second half of 2023. In the meantime, you can contact our community engagement team with any questions and concerns. Details are below.

Contact us

- Visit the **Aircraft Overflight Noise Tool** to view the preliminary flight paths in more detail at wsflightpaths.gov.au
- Keep up-to-date with information via our **Online Community Portal**: wsflightpaths.gov.au
- Email us your questions at wsflightpaths@infrastructure.gov.au
- Call us on **1800 038 160**
- Attend our **Community Information and Feedback Sessions** to find out more and speak to a member of our team.

These information sessions will be held across Western Sydney. You can register to attend via wsflightpaths.gov.au. Further engagement will be held with the community when the draft EIS is released in the second half of 2023.

Australian Government
Department of Infrastructure, Transport,
Regional Development, Communications and the Arts

June 2023

Western Sydney International (Nancy-Bird Walton) Airport

Noise assessment

The new Western Sydney International (Nancy-Bird Walton) Airport (WSI) is set to open for freight, domestic and international travellers by late 2026.

The Australian Government has released the preliminary flight paths for WSI for the community to view. These flight paths have yet to be assessed and approved by the regulatory authority and will be subject to a formal statutory planning and consultation period later this year.

View the preliminary flight paths

Designing flight paths is highly technical work. The work involves thorough validation and review to ensure aircraft can use the flight paths. The design has to balance the needs of the community, environment, industry and users of the Greater Sydney airspace, while maintaining safety as the priority.

You are encouraged to visit the **Aircraft Overflight Noise Tool**, which can be accessed through the **Online Community Portal**, to see the preliminary flight paths and the predicted aircraft noise impacts. We understand that you may have a wide range of questions about the preliminary flight paths, and are available to speak with you at our Community Information and Feedback Sessions, on **1800 038 160** or via email at wsflightpaths@infrastructure.gov.au. Detailed information is also available on our **Online Community Portal**.

Approvals process

Formal feedback for the preliminary flight paths can be provided during the draft Environmental Impact Statement (EIS) exhibition period in the second half of 2023. In the meantime, you can contact our community engagement team with any questions and concerns. Details are below.

Contact us

- Visit the **Aircraft Overflight Noise Tool** to view the preliminary flight paths in more detail at wsflightpaths.gov.au
- Keep up-to-date with information via our **Online Community Portal**: wsflightpaths.gov.au
- Email us your questions at wsflightpaths@infrastructure.gov.au
- Call us on **1800 038 160**
- Attend our **Community Information and Feedback Sessions** to find out more and speak to a member of our team.

These information sessions will be held across Western Sydney. You can register to attend via wsflightpaths.gov.au. Further engagement will be held with the community when the draft EIS is released in the second half of 2023.

It's important to make a submission



Review the draft EIS

Technical reports outlined in the draft EIS are available to view, to help inform your submissions. Our team can also help explain areas of your interest in more detail.



Online

Go to wsiflightpaths.gov.au and access to the online submission's portal.



Via email

By email to eis.submissions@infrastructure.gov.au



Postal

Mail to Attn: WSI Flight Path Team, GPO Box 594, CANBERRA ACT 2601.



Speak to the team to find out more

The Community Information Sessions are being held at a range of times and we encourage anyone interested to drop in at any time during the times advertised.

These sessions will be an opportunity to read information and to speak to a technical expert, helping you to make an informed submission, via the website, email or post.



Contact us: the community can call or email to speak with us

Email: wsiflightpaths@infrastructure.gov.au

Phone: 1800 038 160

**Thank you and
discussion**

6. Western Sydney Airport Update

Katy Hannouch

WSA Co Ltd

An aerial rendering of the Western Sydney International (Nancy-Bird Walton) Airport. The image shows a large, modern terminal building with a blue roof and glass facade, surrounded by a vast tarmac area with numerous aircraft parked at gates. The airport is set against a backdrop of green fields and a clear sky. The text "Western Sydney International (Nancy-Bird Walton) Airport" is overlaid in large white letters across the center of the image.

Western Sydney International (Nancy-Bird Walton) Airport

Forum on Western Sydney Airport
September 2023



**Western
Sydney
Airport**





Airport progress update

Experience Centre

- Total visitors to Experience Centre: 50,000+
- Visitors across the quarter 10,000
- *Completed 164 bookings*
- *Satisfaction score: 94%*

Airport Construction

- Glass façade continues to be installed on the terminal pier
- Asphaltting of the runway commencing mid-October
- Terminal roof structural steel installation progressing well and expected to be completed by the end of the year
- Internal airport road network and bridges progressing well in both airside and landside areas
- M12 work progress
- Sydney Metro tunnel boring machines

Community Engagement Overview

6 Career Expos

- Cobham Juvenile Justice, Fairfield Emerging Communities Action Partnership, Holsworthy High School, St Josephs Trades, Hawkesbury Schools Careers and Job Seeker Market, Prairiewood High School)

8 Community Activations

- Aerotropolis Community Day, M7-M12 Community Day, Penrith Show, Camden Winterfest, Camden NAIDOC, Cabramatta Moon Festival, Illuminate Wollondilly, Springwood Festival

3 CSIRO Generation STEM workshops

- Belmore Boys, Mount Joseph's, Cumberland High and the Ponds High School

Supported 16 flightpath pop-ups

- 12 Community info sessions (St Clair, Mt Druitt, Parramatta, Katoomba, St Marys, The Oaks, Windsor, Liverpool, Blue Mountains, Penrith, Blacktown, Bringelly)
- 4 (Camden Markets on the Lawn, Narellan Shopping Plaza, Blacktown Markets, Luddenham Country Markets)

ABCN My Career Rules (mentoring)

- Plumpton High School

Navitas Youth Grow-Move-Make

- Project overview, site visit and career pathway, attendees from refugee or migrant background (attended by Training Services NSW)

13 School visits to the WSI Experience Centre

- Engagement with the Department of Education Regional Industry Education Partnership
- 13 site tours

School Mock interview session

- Mount Annan, Oran Park, Ambarvale and Elizabeth Macarthur High Schools

2 TAFE – Aviation

- Youth engagement strategy with TAFE students

First Nations Taking Off Program with AeroWest and DXC

- Plumpton, Campbelltown Performing Arts, Elderslie, Ingleburn, Robert Townsend and Eglevale High Schools





An aerial rendering of the Western Sydney International Airport terminal and tarmac. The terminal is a long, modern building with a blue roof and large glass windows. Numerous aircraft are parked at gates along the terminal. The tarmac is paved with yellow markings and has several aircraft taxiing. The surrounding area includes green spaces, roads, and parking lots. The sky is clear and blue.

Western Sydney International (Nancy-Bird Walton) Airport



**Western
Sydney
Airport**

7. Other Business

FoWSA Members